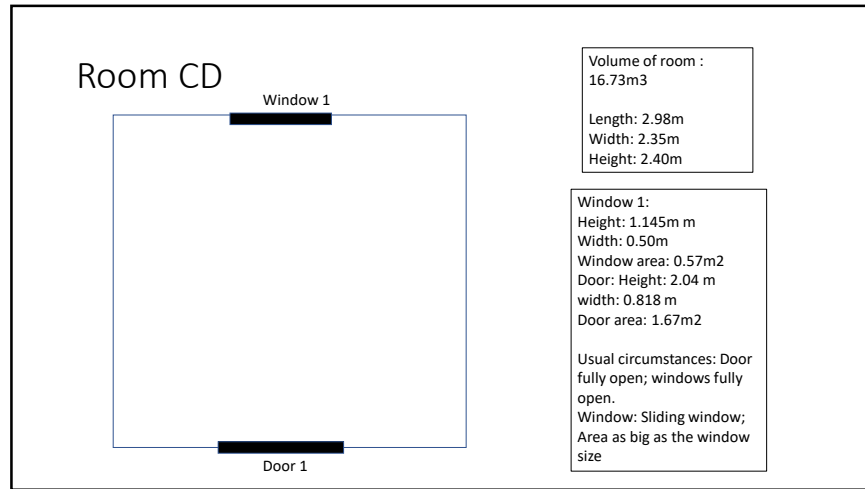
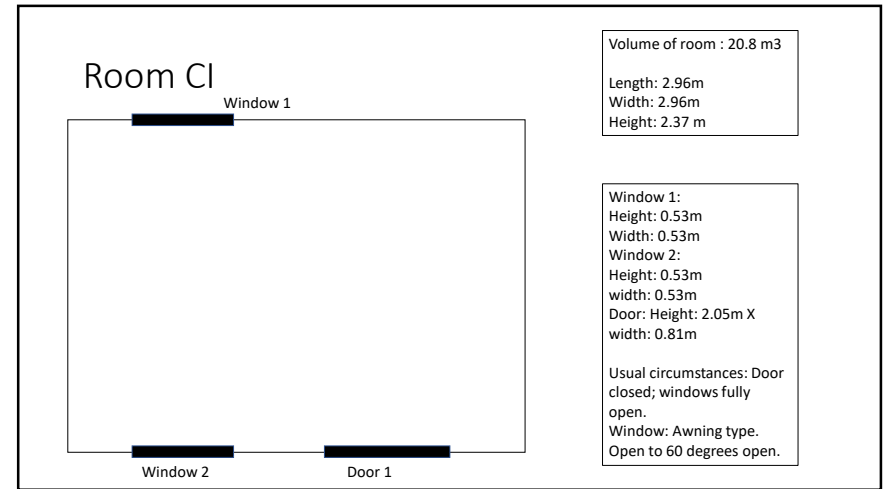


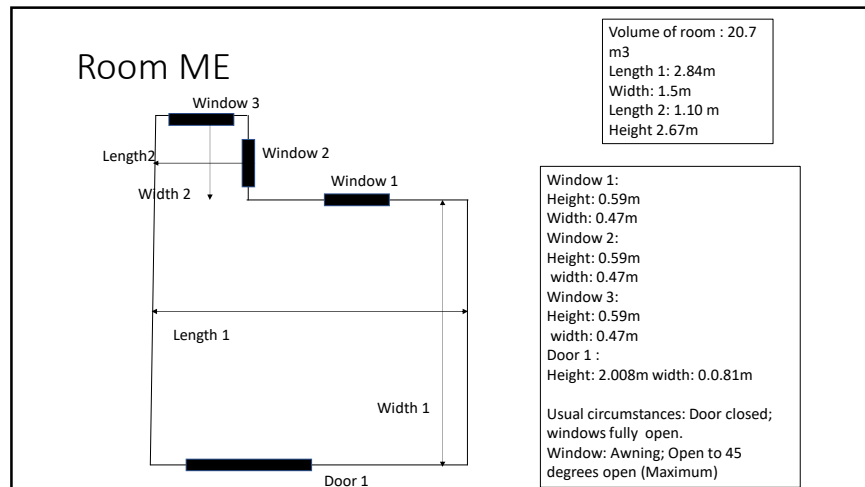
S2 Text: Dimensions of room spaces where tracer gas release experiments were performed



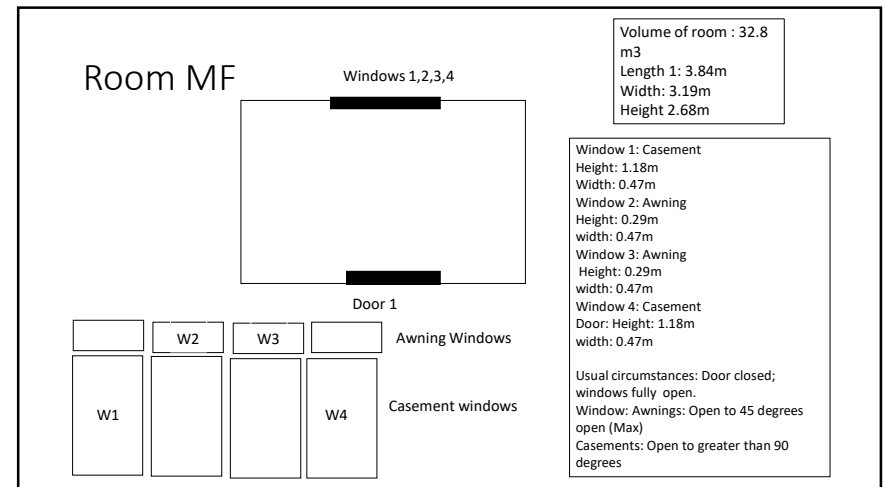
1



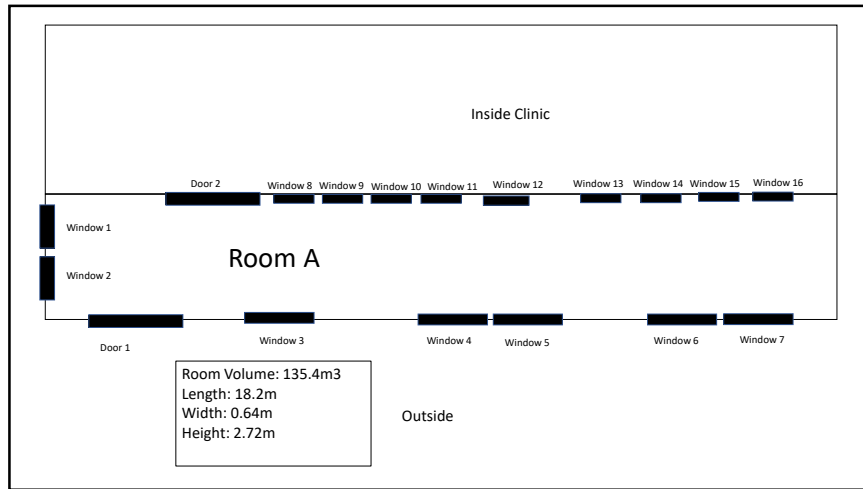
2



3



4

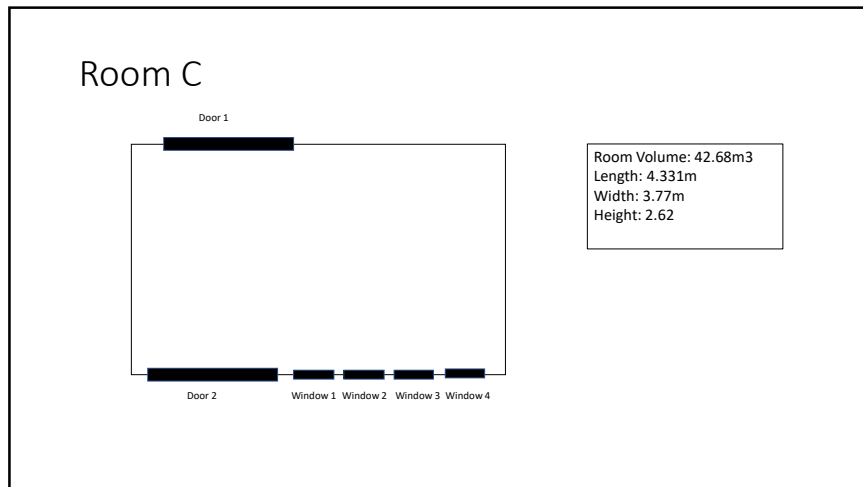


5

Room A: Dimensions

| Window/Door | Facing | Type of window | Height | Width | Area (m2) | How It was open on day of observation |
|-------------|-------------|----------------|--------|-------|-----------|---------------------------------------|
| Window 1 | Outside | Casement | 1.18 | 0.88 | 1.04 | Window closed |
| Window 2 | Outside | Casement | 1.18 | 0.88 | 1.04 | Window closed |
| Window 3 | Outside | Casement | 1.18 | 0.88 | 1.04 | Full open |
| Window 4 | Outside | Casement | 1.18 | 0.88 | 1.04 | 10 degrees |
| Window 5 | Outside | Casement | 1.18 | 0.88 | 1.04 | 10 degrees |
| Window 6 | Outside | Casement | 1.18 | 0.88 | 1.04 | Fully Open |
| Window 7 | Outside | Casement | 1.18 | 0.88 | 1.04 | Fully |
| Window 8 | Into clinic | Casement | 1.18 | 0.47 | 0.55 | Closed |
| Window 9 | Into clinic | Awning | 0.29 | 0.47 | 0.14 | Closed |
| Window 10 | Into Clinic | Awning | 0.29 | 0.47 | 0.14 | 45 degrees |
| Window 11 | Into clinic | Casement | 1.18 | 0.47 | 0.55 | 45 degrees |
| Window 12 | Into clinic | Casement | 0.9 | 0.47 | 0.42 | 10 degrees |
| Window 13 | Into clinic | Awning | 0.59 | 0.47 | 0.28 | Closed |
| Window 14 | Into clinic | Awning | 0.59 | 0.47 | 0.28 | Closed |
| Window 15 | Into clinic | Casement | 0.59 | 0.47 | 0.28 | Closed |
| Window 16 | Into Clinic | Casement | 0.9 | 0.47 | 0.42 | 5 degrees |
| Door 1 | Outside | Double door | 2.0 | 1.59 | 3.22 | Fully Open |
| Door 2 | Into clinic | Double door | 1.96 | 1.8 | 3.52 | Fully Open |

6



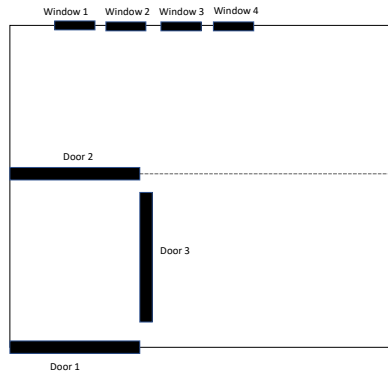
7

Room C dimensions

| Window/Door | Facing | Type of window/window | Height | Width | Area (m2) | How It was open on day of observation |
|-------------|-------------------|-----------------------|--------|-------|-----------|---------------------------------------|
| Window 1 | Into waiting area | Casement | 1.18 | 0.47 | 0.55 | Closed |
| Window 2 | Into waiting area | Casement | 0.29 | 0.47 | 0.14 | Closed |
| Window 3 | Into waiting area | Casement | 0.29 | 0.47 | 0.14 | 45 degrees |
| Window 4 | Into waiting area | Casement | 1.18 | 0.47 | 0.55 | 45 degrees |
| Door 1 | Into clinic | Double door | 1.98 | 1.59 | 3.15 | Fully Open |
| Door 2 | Into clinic | Double door | 1.96 | 1.8 | 3.52 | Fully Open |

8

Room H



Room Volume: 42.68m³
 Length: 4.161m
 Width: 3.766m
 Height: 2.6m

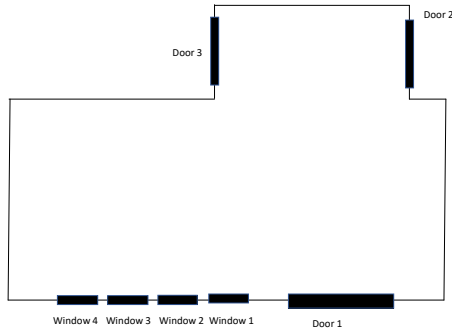
9

Room H dimensions

| Window/Door | Type of window | Height | Width | Area (m ²) | How it was open on day of observation |
|-------------|----------------|--------|-------|------------------------|---------------------------------------|
| Window 1 | Casement | 1.19 | 0.47 | 0.55 | 20 degrees |
| Window 2 | Awning | 0.91 | 0.28 | 0.26 | 20 degrees |
| Window 3 | Awning | 0.91 | 0.28 | 0.26 | Closed |
| Window 4 | Casement | 1.19 | 0.47 | 0.55 | Closed |
| Door 1 | Single door | 2.03 | 0.81 | 1.66 | Open |
| Door 2 | Single door | 2.03 | 0.81 | 1.66 | Closed |
| Door 3 | Single door | 2.03 | 0.81 | 1.66 | Closed |

10

Room K



Room Volume:
 Length: 4.161m
 Width: 3.766m
 Height: 2.6m

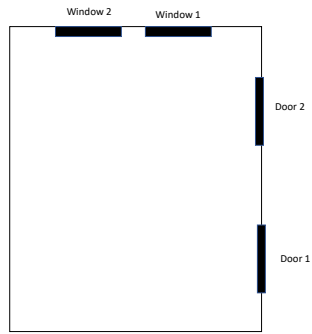
11

Room K dimensions

| Window/Door | Type of window | Height | Width | Area (m ²) | How it was open on day of observation |
|-------------|----------------|--------|-------|------------------------|---|
| Window 1 | Casement | 0.88 | 0.44 | 0.39 | 5 degrees |
| Window 2 | Awning | 0.26 | 0.91 | 0.24 | 5 degrees |
| Window 3 | Casement | 0.88 | 0.44 | 0.39 | Closed |
| Window 4 | Awning | 0.26 | 0.91 | 0.24 | 5 degrees |
| Door 1 | Double door | 2.00 | 1.60 | 3.20 | 1 door open of the two (half the door open) |
| Door 2 | Single door | 2.02 | 0.82 | 1.64 | Closed |
| Door 3 | Single door | 2.00 | 0.82 | 1.64 | Closed |

12

Room M



Room Volume: 44.78 m³
 Length: 5.15m
 Width: 3.23m
 Height: 2.69m

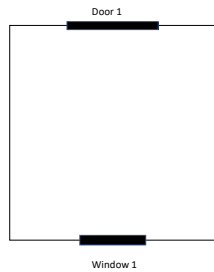
13

Room M Dimensions

| Window/Door | Type of window | Height | Width | Area (m ²) | How it was open on day of observation |
|-------------|----------------|--------|-------|------------------------|---------------------------------------|
| Window 1 | Casement | 0.88 | 0.46 | 0.40 | Closed |
| Window 2 | Awning | 0.27 | 0.93 | 0.25 | Fully open (45 degrees) |
| Door 1 | Single | 2.01 | 0.81 | 1.63m ³ | Door closed |
| Door 2 | Single | 2.01 | 0.81 | 1.63m ³ | Door closed |

14

Room S



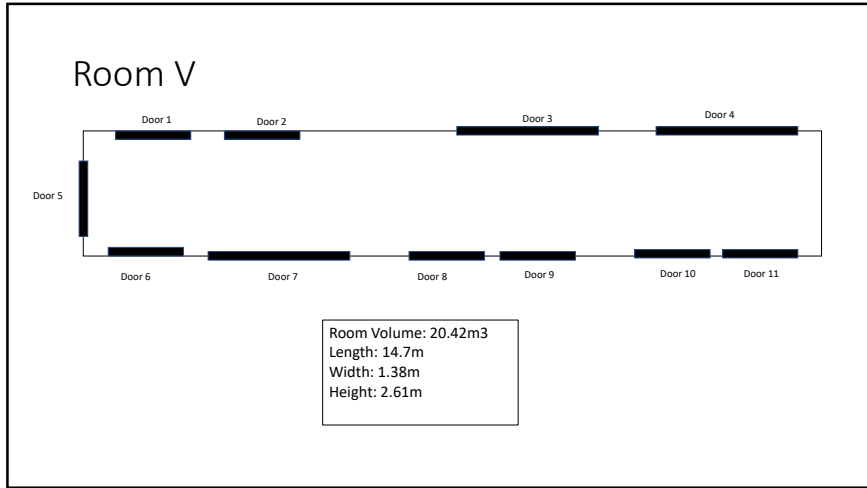
Room Volume: 14.69m³
 Length: 2.86m
 Width: 2.10m
 Height: 2.45m

Door 1
 Height: 2.04m
 Width: 0.82m
 Under usual circumstances:
 Door closed

Window: Sliding
 Height: 0.84m
 Width: 0.55m
 Under usual circumstances:
 Slid open by 20cm

15

16

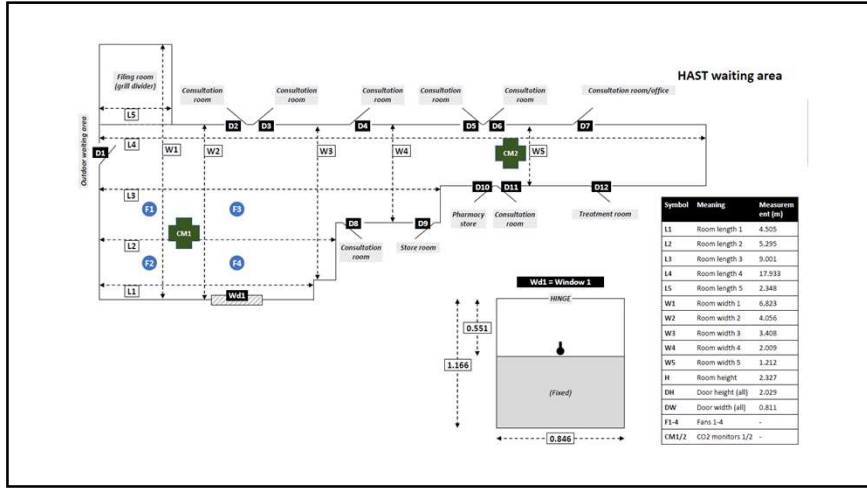


17

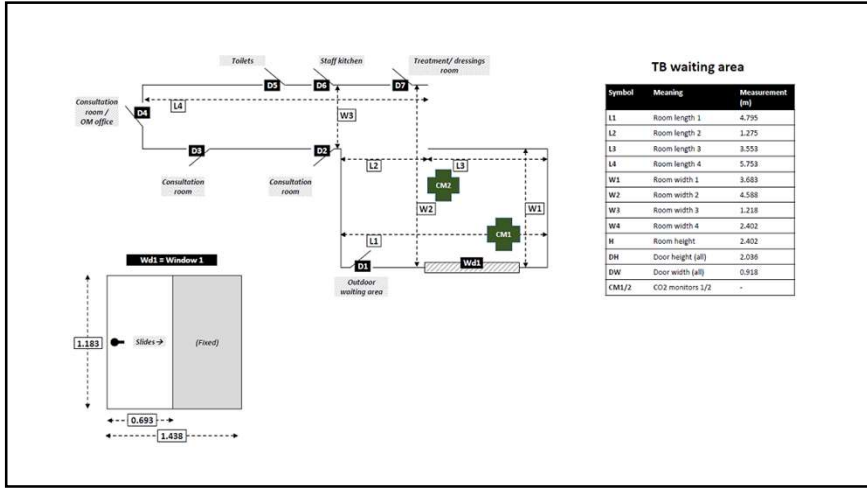
Dimensions of Room V

| Door | Height | Width | Area (m ²) | How it was open on day of observation |
|---------|--------|-------|------------------------|---------------------------------------|
| Door 1 | 2.03 | 0.81 | 1.66 | Closed |
| Door 2 | 2.03 | 0.81 | 1.66 | Open |
| Door 3 | 1.97 | 1.59 | 3.13 | Closed |
| Door 4 | 1.97 | 1.59 | 3.13 | One half open |
| Door 5 | 2.044 | 0.82 | 1.68 | Closed |
| Door 6 | 2.03 | 0.81 | 1.66 | Closed |
| Door 7 | 1.96 | 1.8 | 3.52 | Fully Open |
| Door 8 | 2.03 | 0.81 | 1.66 | Open |
| Door 9 | 2.03 | 0.81 | 1.66 | Closed |
| Door 10 | 2.03 | 0.81 | 1.66 | Closed |
| Door 11 | 2.03 | 0.81 | 1.66 | Closed |

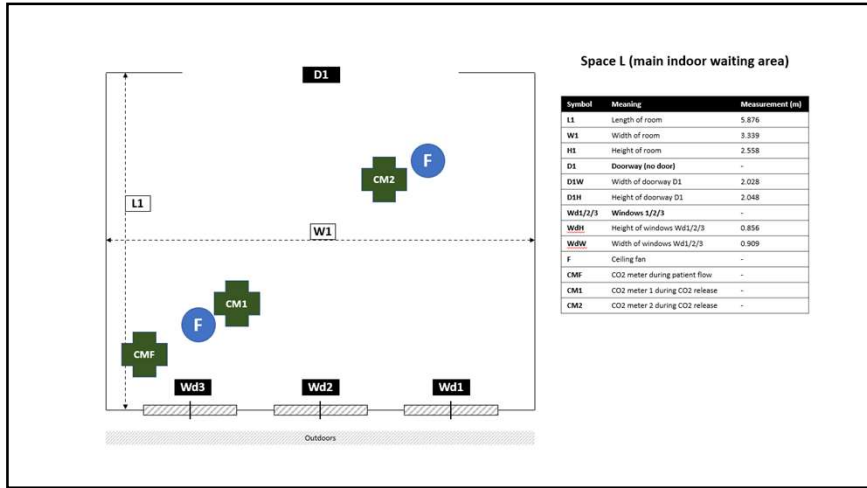
18



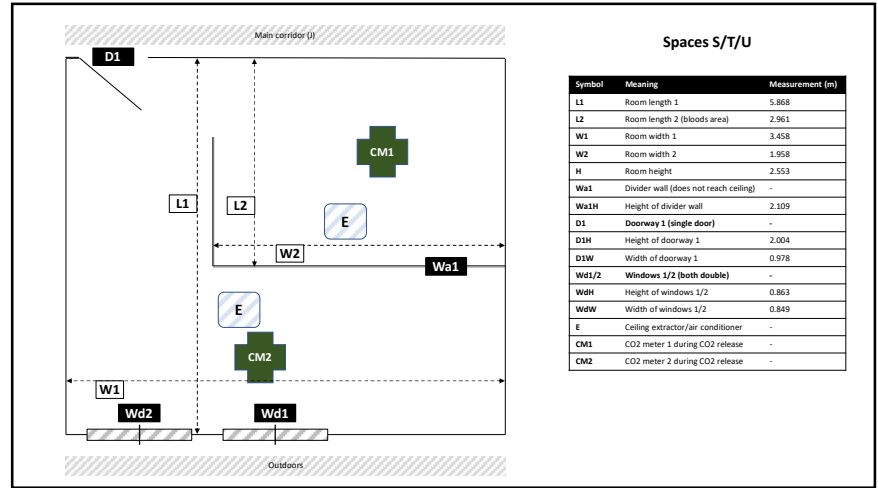
19



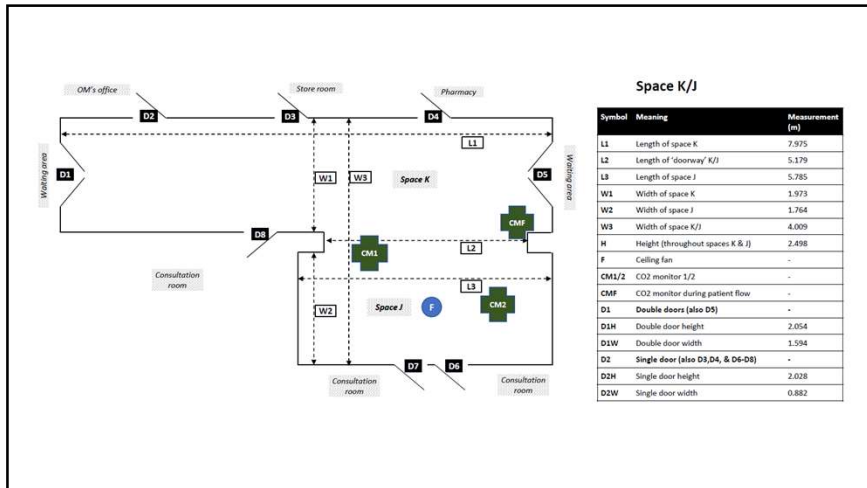
20



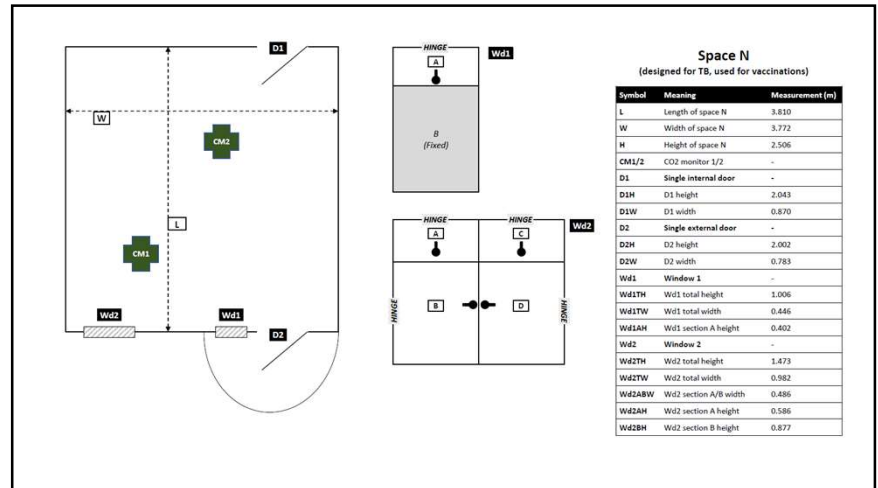
21



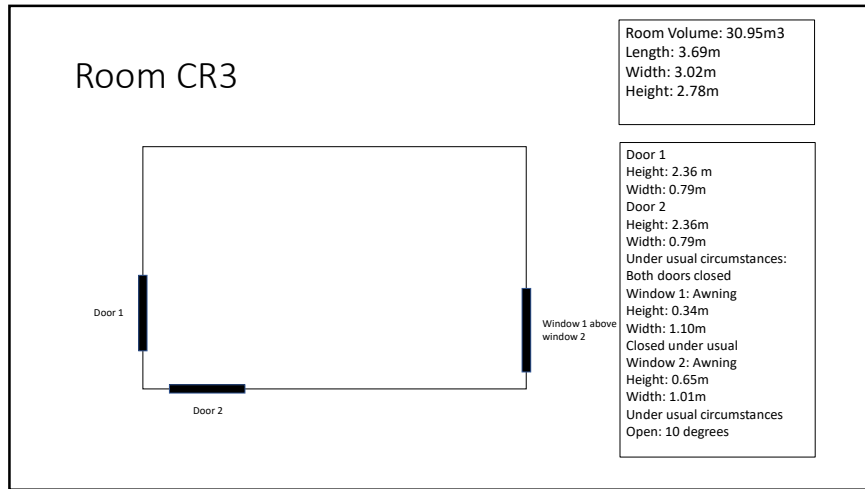
22



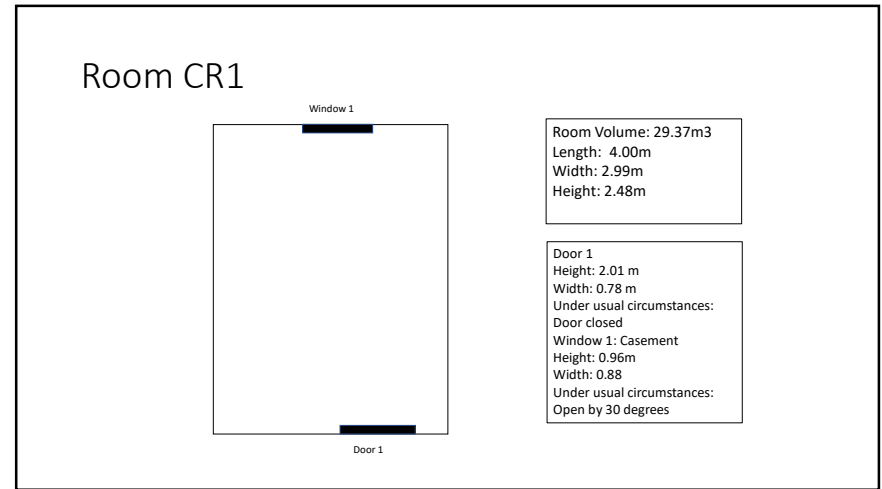
23



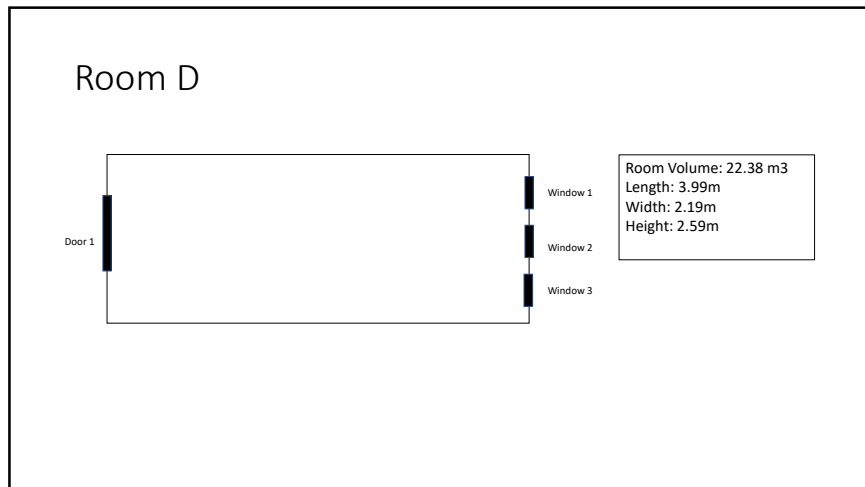
24



25



26



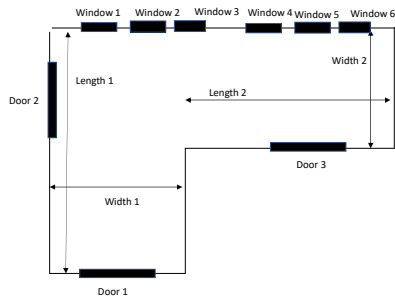
27

Room D Dimensions

| Door | Type of window/door | Height | Width | Area (m ²) | How it was open on day of observation |
|----------|---------------------|--------|-------|------------------------|---------------------------------------|
| Window 1 | Casement | 0.88 | 0.47 | 0.41 | Closed |
| Window 2 | Awning | 0.29 | 0.47 | 0.14 | Closed |
| Window 3 | Casement | 0.88 | 0.47 | 0.41 | Closed |
| Door 1 | Single | 2.00 | 0.79 | 0.82 | Closed |

28

Room G



Room Volume: 31.26 m³

Length 1: 3.99 m
Width 1: 2.36 m

Length 2: 2.11m
Width 2: 1.51m
Height: 2.54 m

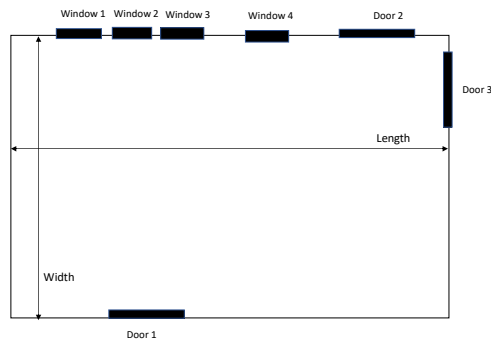
29

Room G dimensions

| Door | Type of window/door | Height | Width | Area (m ²) | How it was open on day of observation |
|----------|---------------------|--------|-------|------------------------|--|
| Window 1 | Casement | 0.88 | 0.47 | 0.41 | Maximally open (Protective change limiting it to 30 degrees) |
| Window 2 | Awning | 0.29 | 0.47 | 0.14 | Maximally open (45 degrees limited by protective cage) |
| Window 3 | Casement | 0.88 | 0.47 | 0.41 | Maximally open (30 degrees secondary to change) |
| Window 4 | Casement | 0.88 | 0.47 | 0.41 | Maximally open (Protective change limiting it to 30 degrees) |
| Window 5 | Awning | 0.29 | 0.47 | 0.14 | Maximally open (45 degrees limited by protective cage) |
| Window 6 | Casement | 0.88 | 0.47 | 0.41 | Maximally open (30 degrees secondary to change) |
| Door 1 | Single | 2.00 | 0.79 | 0.82 | Open |
| Door 2 | Single | 2.00 | 0.79 | 0.82 | Closed |
| Door 3 | Single | 2.00 | 0.79 | 0.82 | Closed |

30

Room H



Room Volume: 45.46 m³

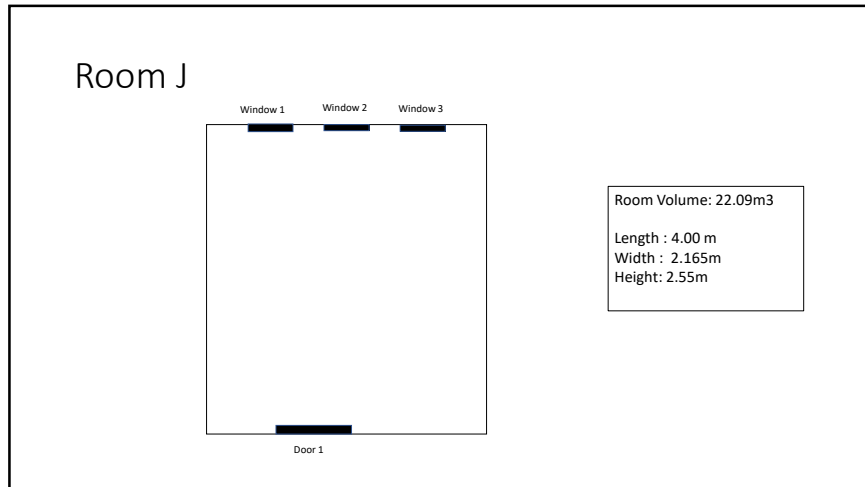
Length : 4.458 m
Width : 4.00m
Height: 2.55m

31

Room H dimensions

| Door | Type of window/door | Height | Width | Area (m ²) | How it was open on day of observation |
|----------|---------------------|--------|-------|------------------------|--|
| Window 1 | Casement | 0.88 | 0.47 | 0.41 | Maximally open 30 degrees |
| Window 2 | Awning | 0.29 | 0.47 | 0.14 | Maximally open (45 degrees limited by protective cage) |
| Window 3 | Casement | 0.88 | 0.47 | 0.41 | Maximally open: 30 degrees |
| Window 4 | Casement | 0.88 | 0.47 | 0.41 | Maximally open to 30 degrees |
| Door 1 | Single | 2.00 | 0.79 | 0.82 | Closed |
| Door 2 | Single | 2.00 | 0.79 | 0.82 | Closed |
| Door 3 | Single | 2.00 | 0.79 | 0.82 | Closed |

32

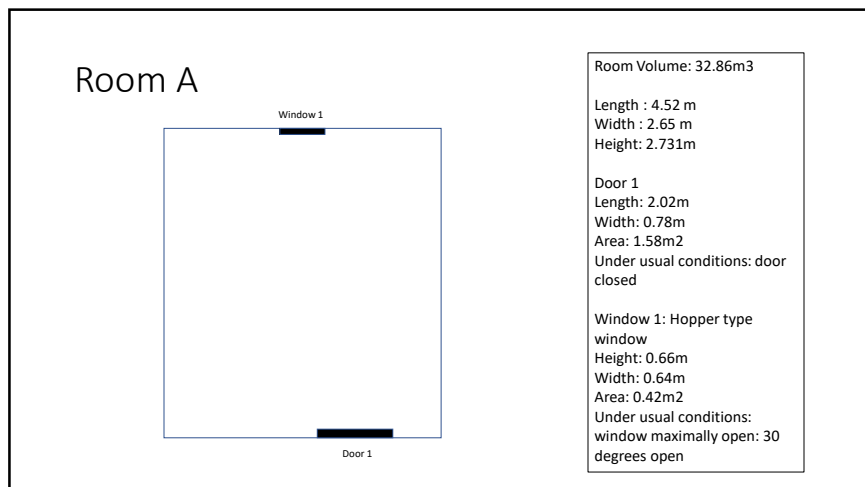


33

Room J dimensions

| Door | Type of window/door | Height | Width | Area (m ²) | How it was open on day of observation |
|----------|---------------------|--------|-------|------------------------|---------------------------------------|
| Window 1 | Casement | 0.88 | 0.47 | 0.41 | Maximally open 30 degrees |
| Window 2 | Awning | 0.29 | 0.47 | 0.14 | Closed |
| Window 3 | Casement | 0.88 | 0.47 | 0.41 | Maximally open: 30 degrees |
| Door 1 | Single | 2.00 | 0.79 | 0.82 | Closed |

34



35